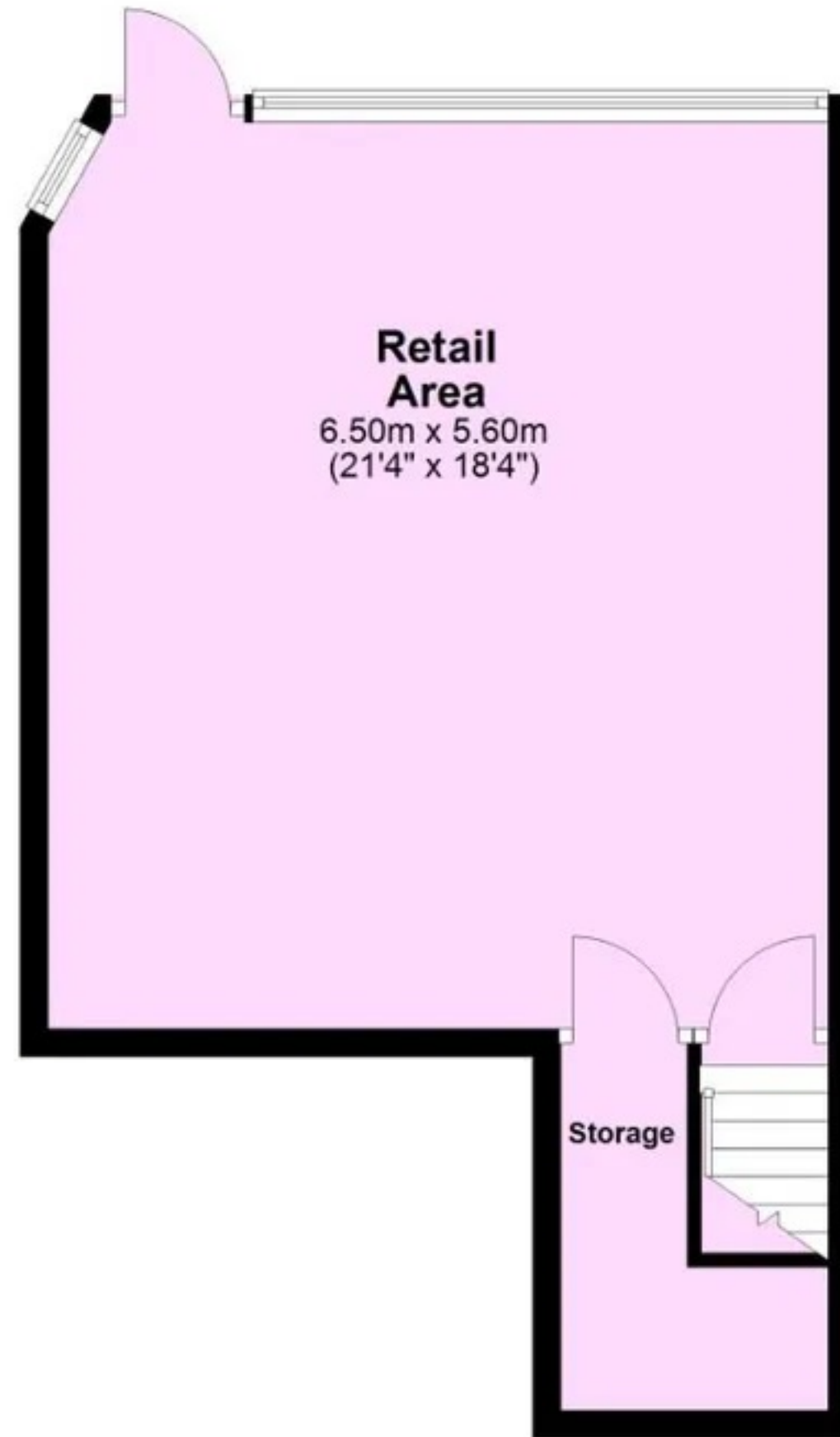


Ground Floor

Approx. 42.5 sq. metres (457.8 sq. feet)



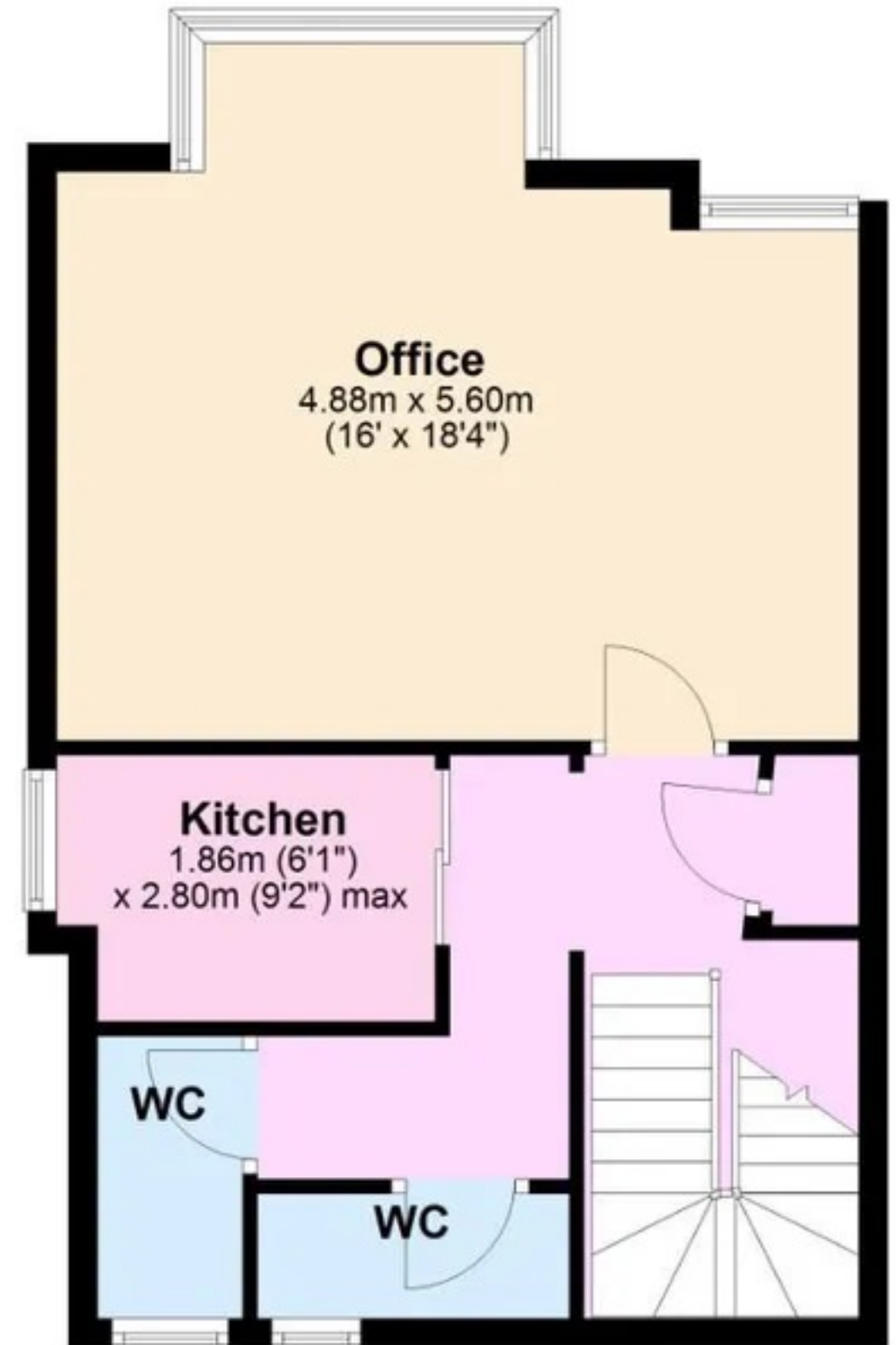
Lower Ground Floor

Approx. 14.5 sq. metres (156.3 sq. feet)



First Floor

Approx. 45.4 sq. metres (488.6 sq. feet)



Total area: approx. 102.4 sq. metres (1102.6 sq. feet)