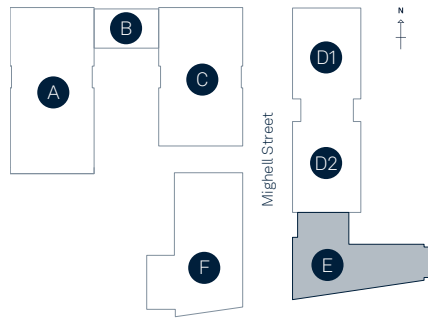


# 41 Edward Street

## Block E

Residential and Office/Leisure building



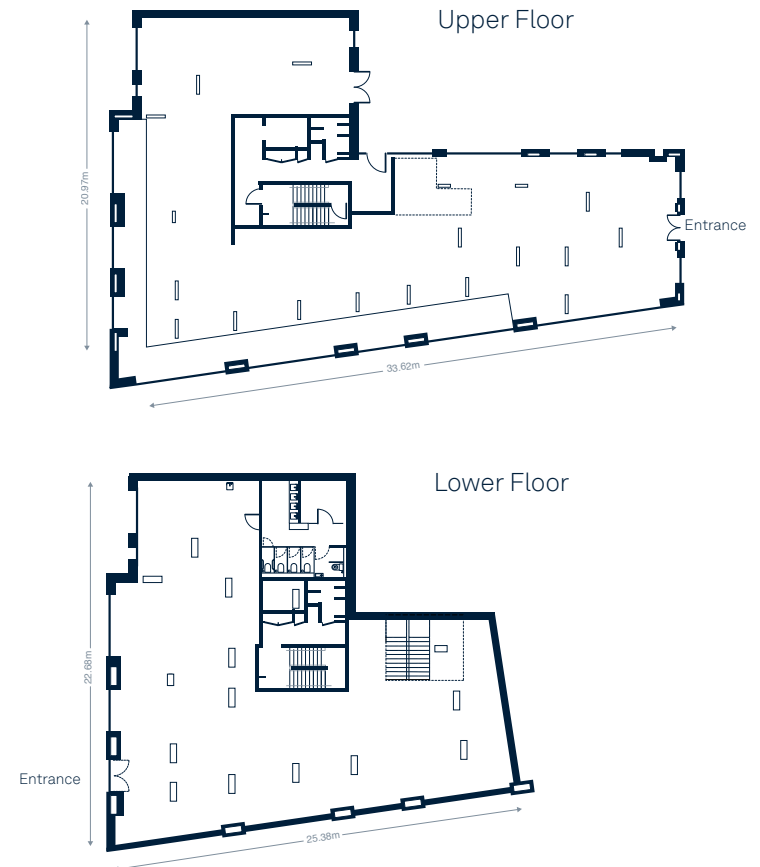
### Areas:

Upper Floor	4,053ft <sup>2</sup> 376m <sup>2</sup>
Lower Floor	3,919ft <sup>2</sup> 364m <sup>2</sup>
	<b>7,972ft<sup>2</sup> 741m<sup>2</sup></b>

### Floor to Ceiling Height:

Upper Floor	3,055 mm
Lower Floor	3,220 mm

(\*Structural Slab Level to Concrete Soffit)



EDWARD  
STREET  
QUARTER