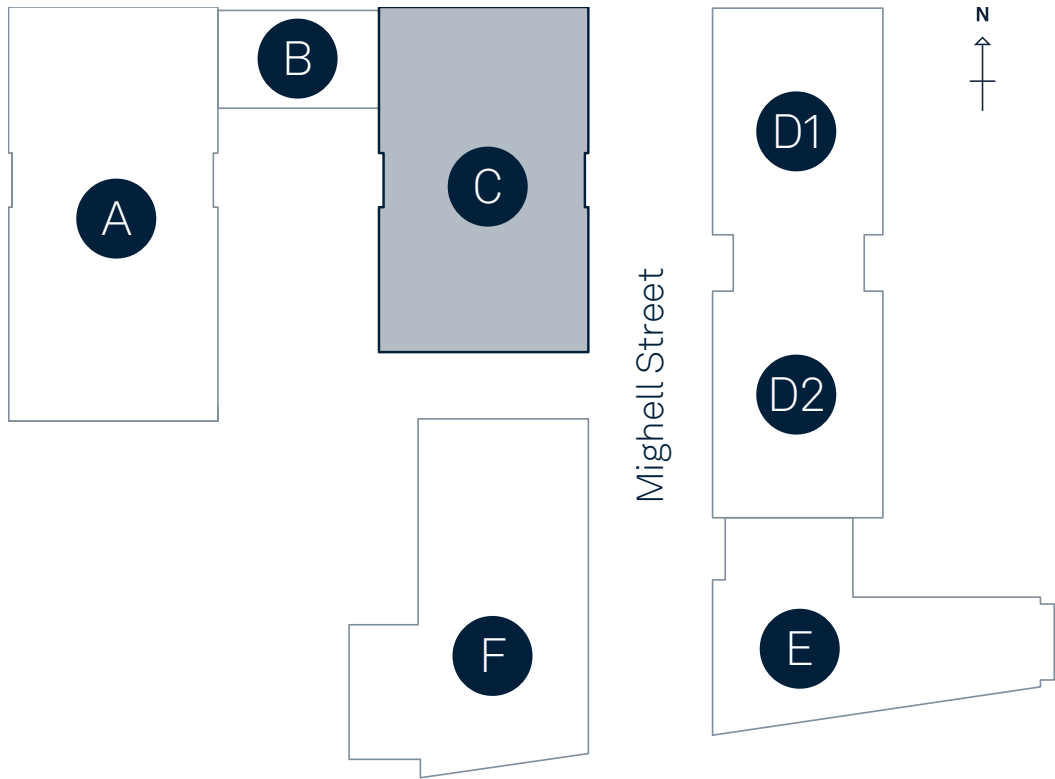


Three Neptune Square

Block C

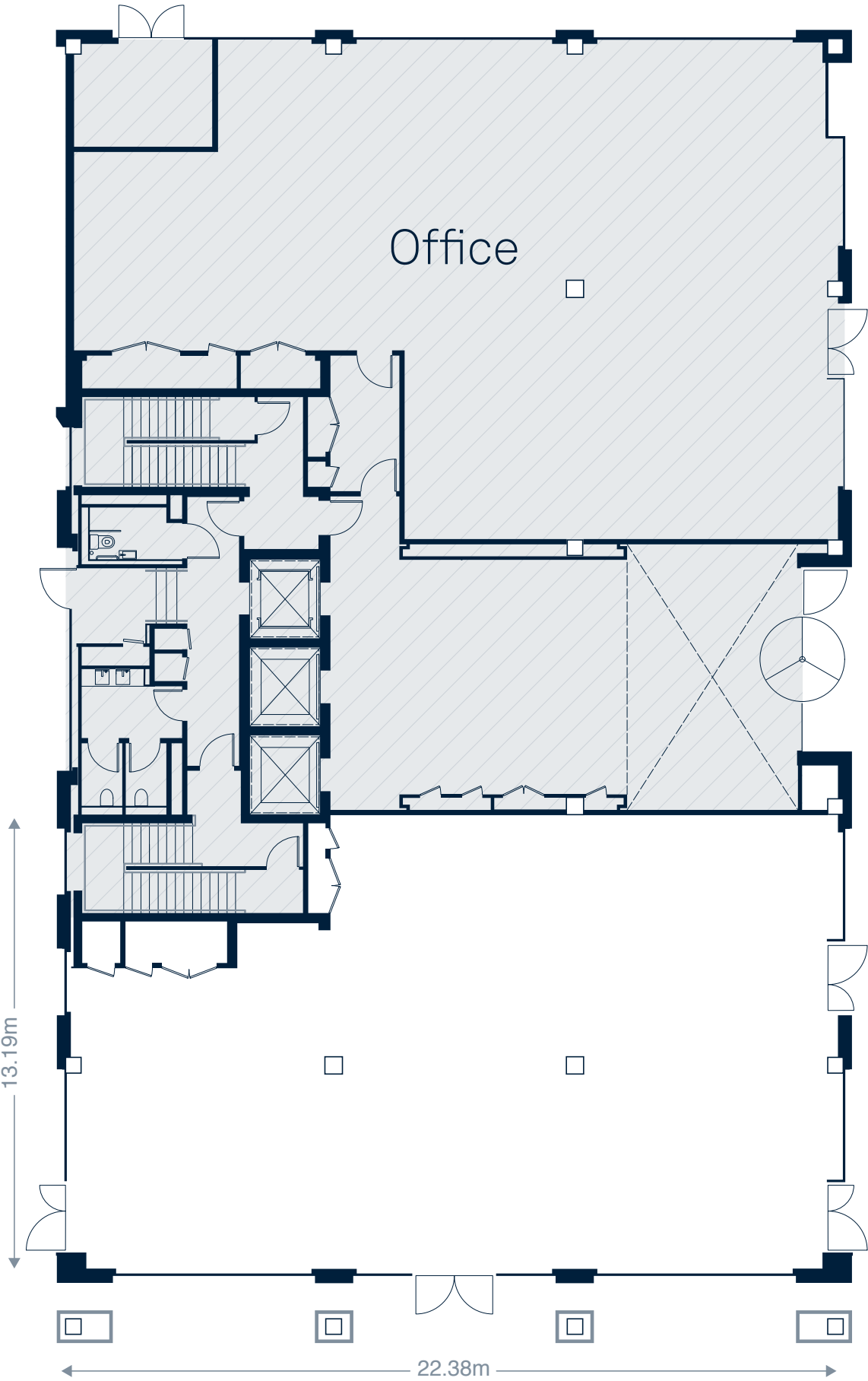
Office and Leisure building



Area:

Ground floor	2,813ft ² 261m ²
--------------	---

Floor to Ceiling Height:
4,200mm—4,250mm
(*Structural Slab Level to Concrete Soffit)

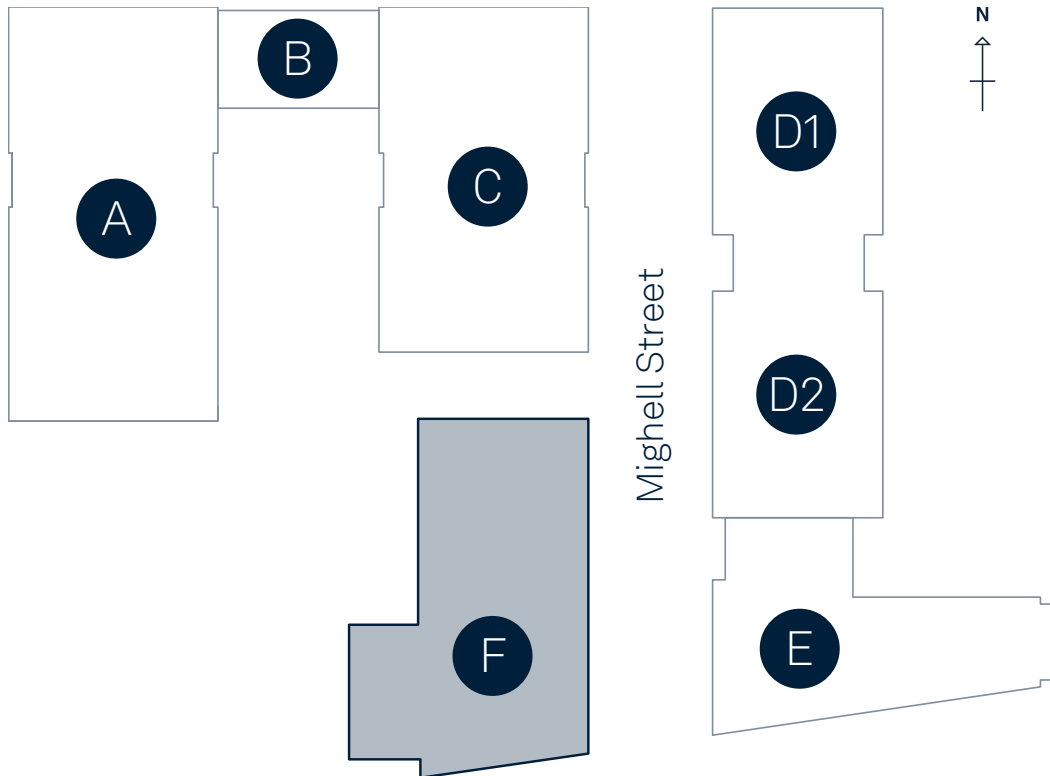


EDWARD
STREET
QUARTER

39 Edward Street

Block F, Lower Mighell St

Residential and Office/Leisure building



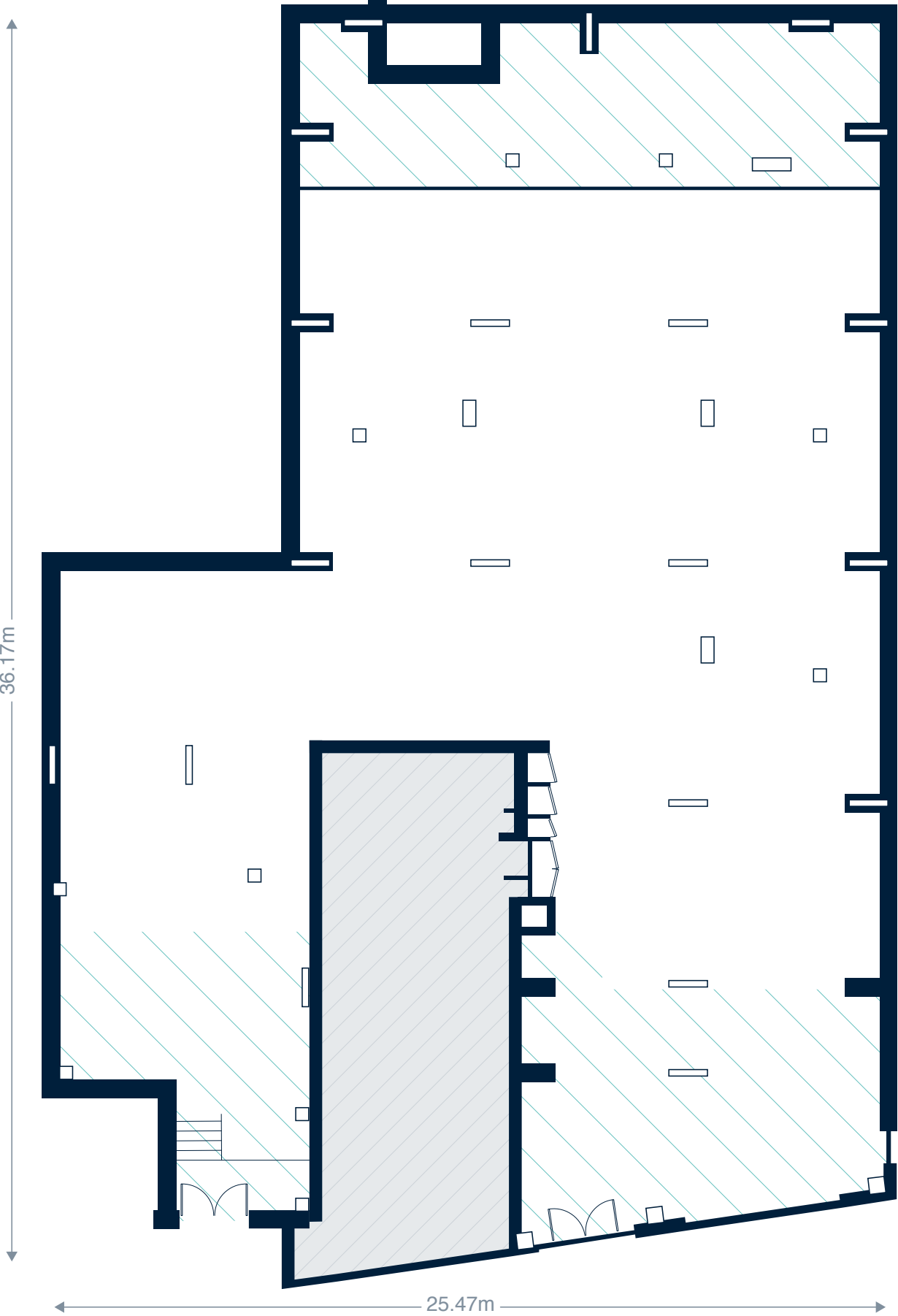
Area:

Lower Mighell St floor	7,225ft ² 671m ²
------------------------	---

Floor to Ceiling Height:

3,400mm (*Structural Slab Level to Concrete Soffit)
3,050mm (in hashed Northern section)
3,650mm (in the hashed Southern section)

EDWARD
STREET
QUARTER



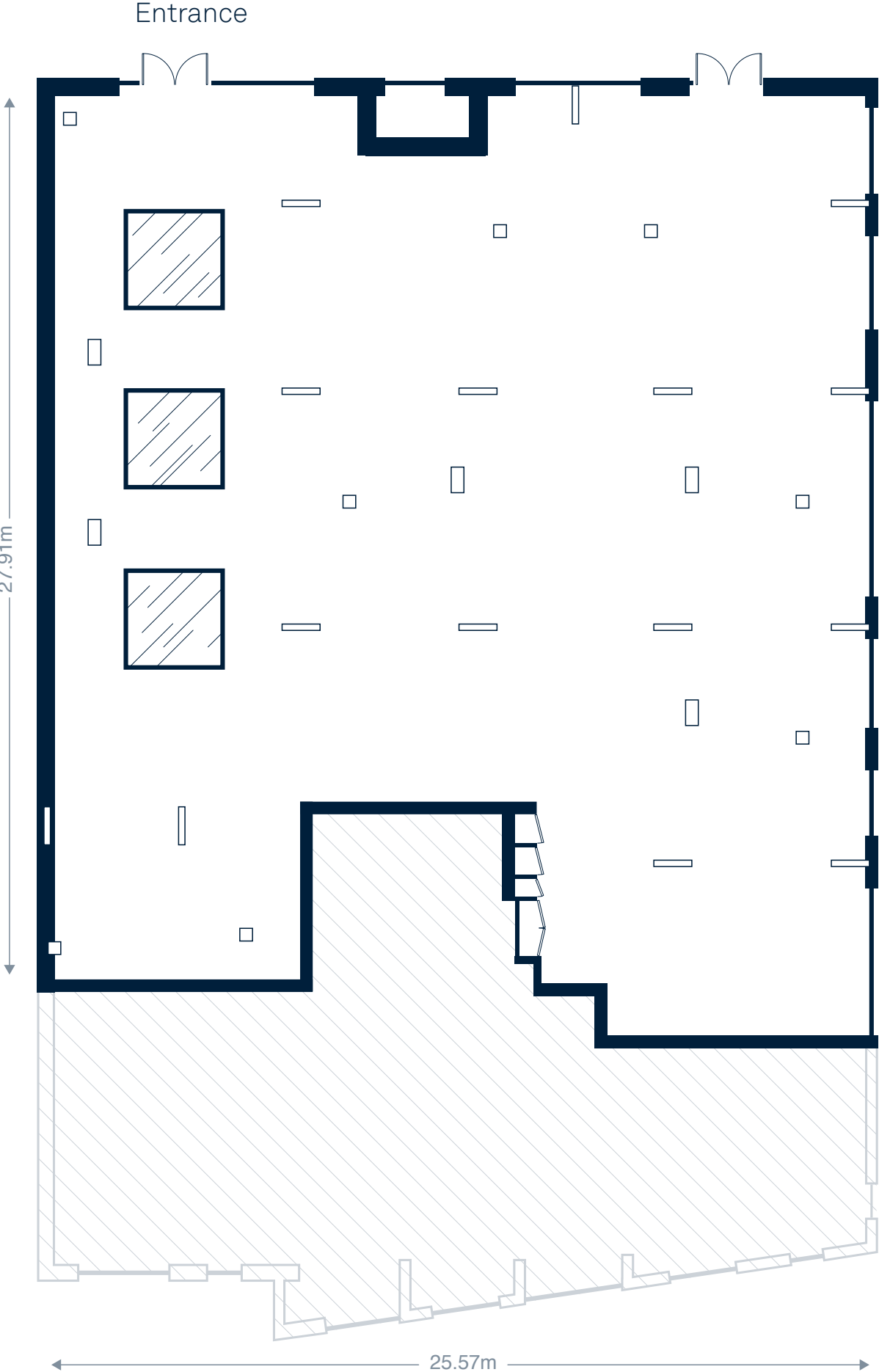
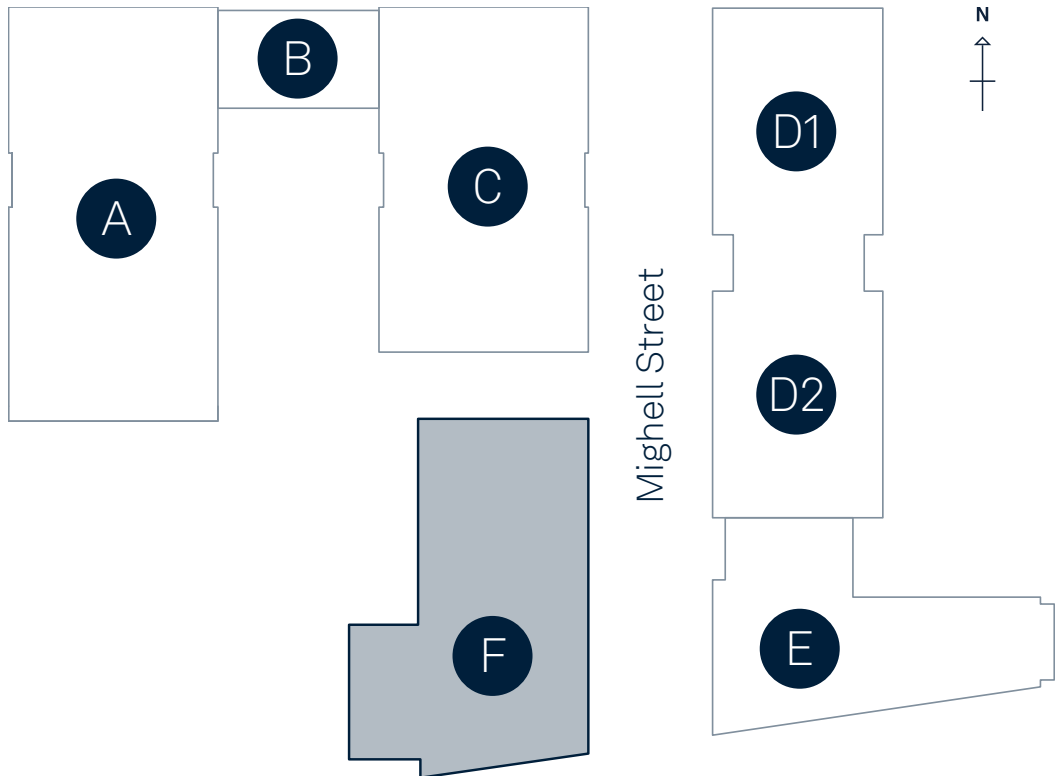
40 Edward Street

Block F, Upper Mighell St

Residential and Office/Leisure building

Area:
Upper Mighell St floor 7,255ft²
674m²

Floor to Ceiling Height:
3,650mm
(*Structural Slab Level to Concrete Soffit)

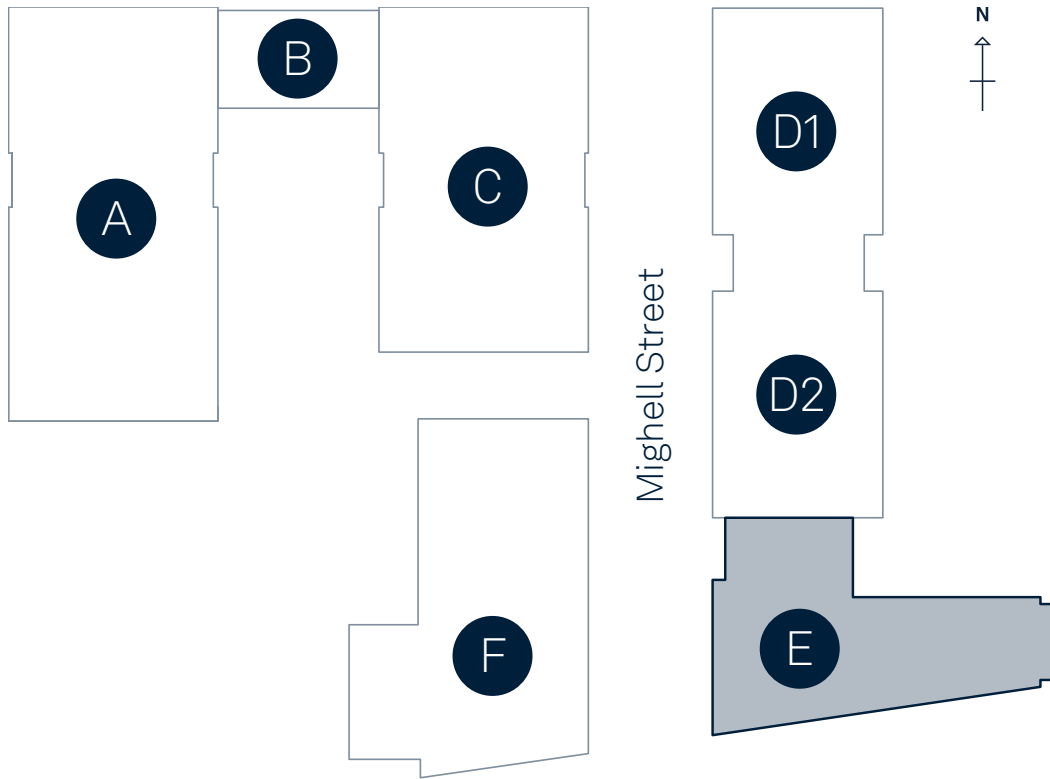


EDWARD
STREET
QUARTER

41 Edward Street

Block E

Residential and Office/Leisure building



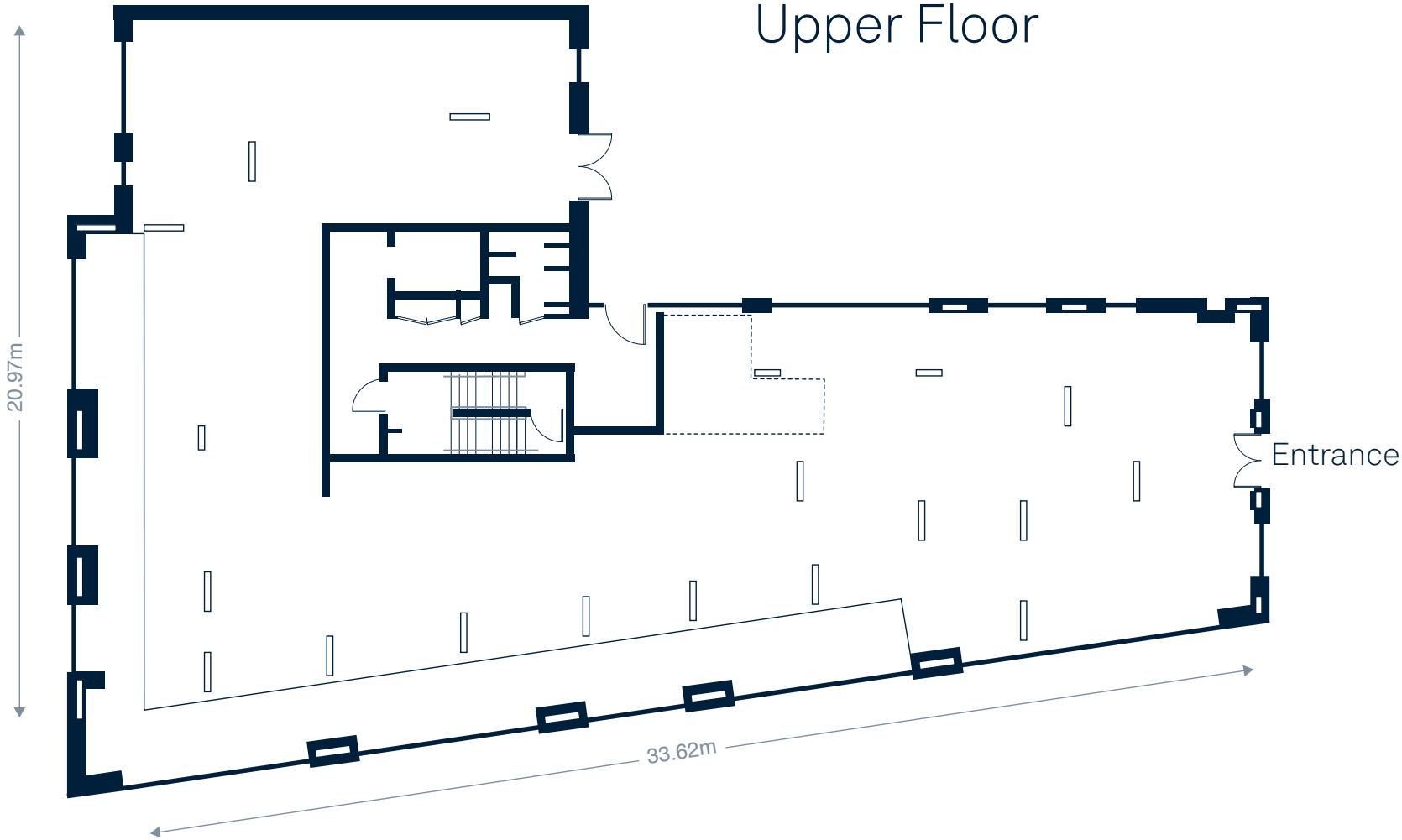
Areas:

Upper Floor	4,053ft ² 376m ²
Lower Floor	3,919ft ² 364m ²
Total	7,972ft² 741m²

Floor to Ceiling Height:

Upper Floor	3,055 mm
Lower Floor	3,220 mm

(*Structural Slab Level to Concrete Soffit)

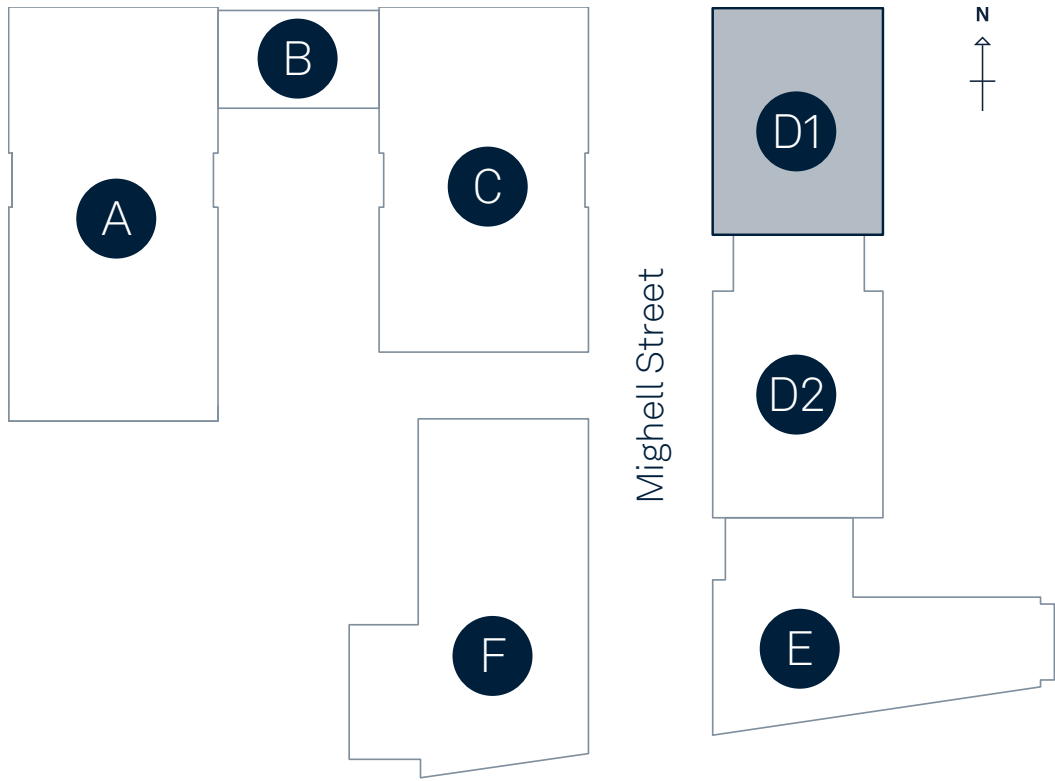


EDWARD
STREET
QUARTER

42 Mighell Street

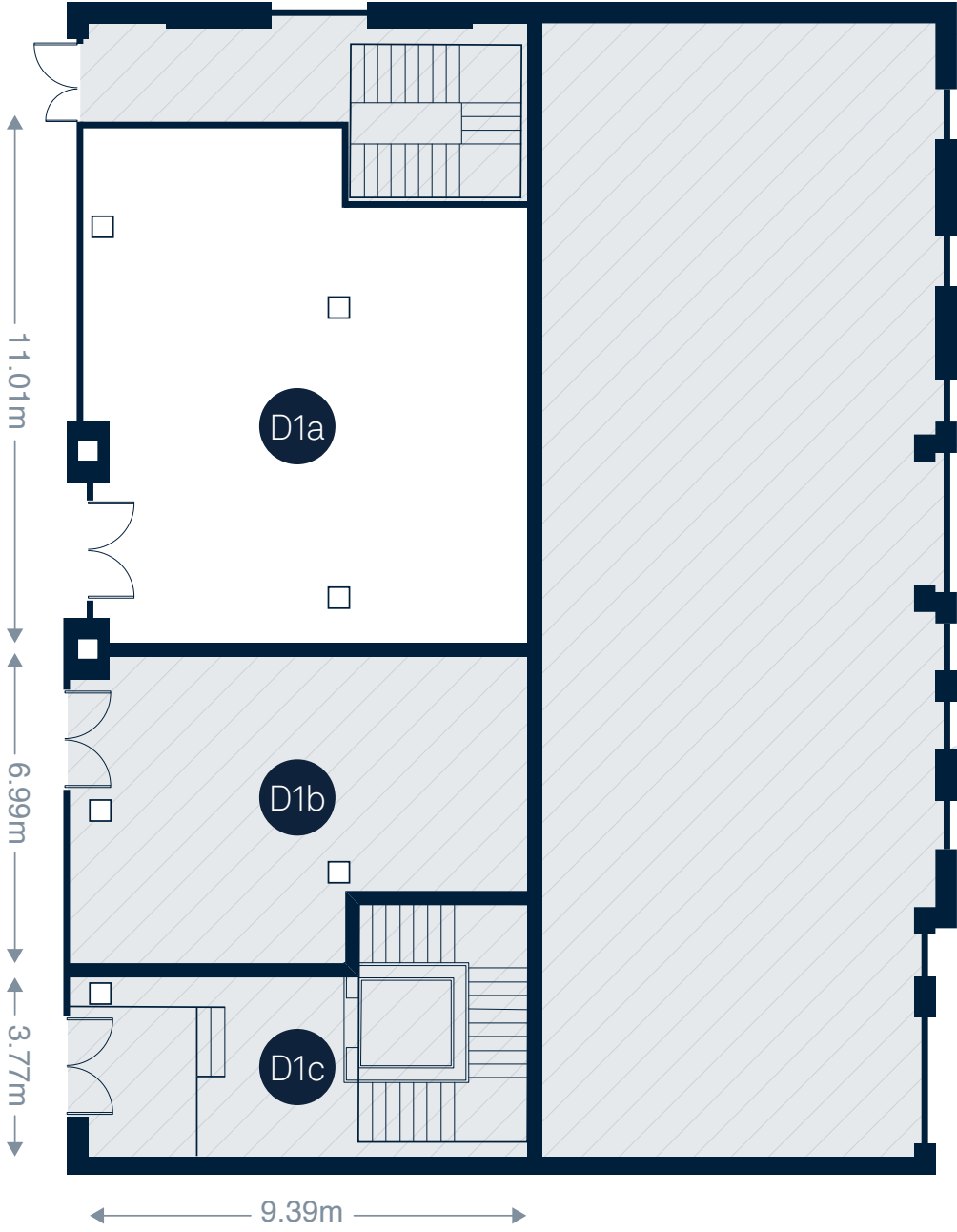
Block D — Unit D1a

Residential and Leisure building



Area:	
D1a Ground Floor	1,023ft ² 95m ²
Floor to Ceiling Height:	
D1a	3,200mm
(*Structural Slab Level to Concrete Soffit)	

Ground Floor

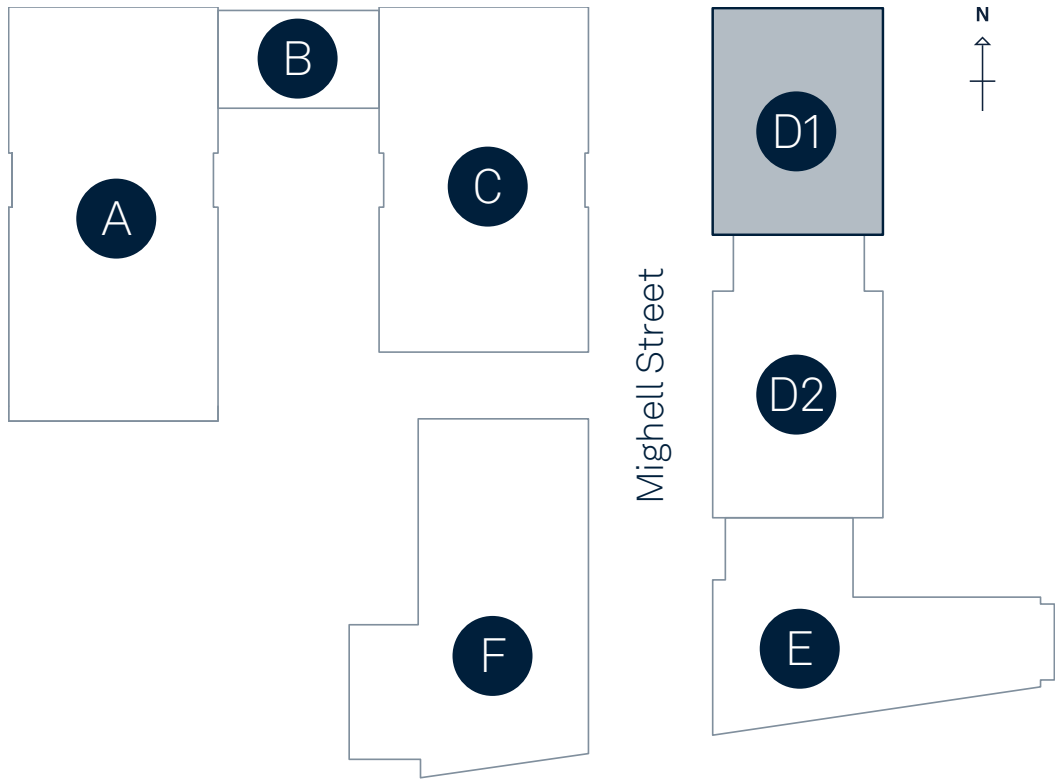


EDWARD
STREET
QUARTER

42 Mighell Street

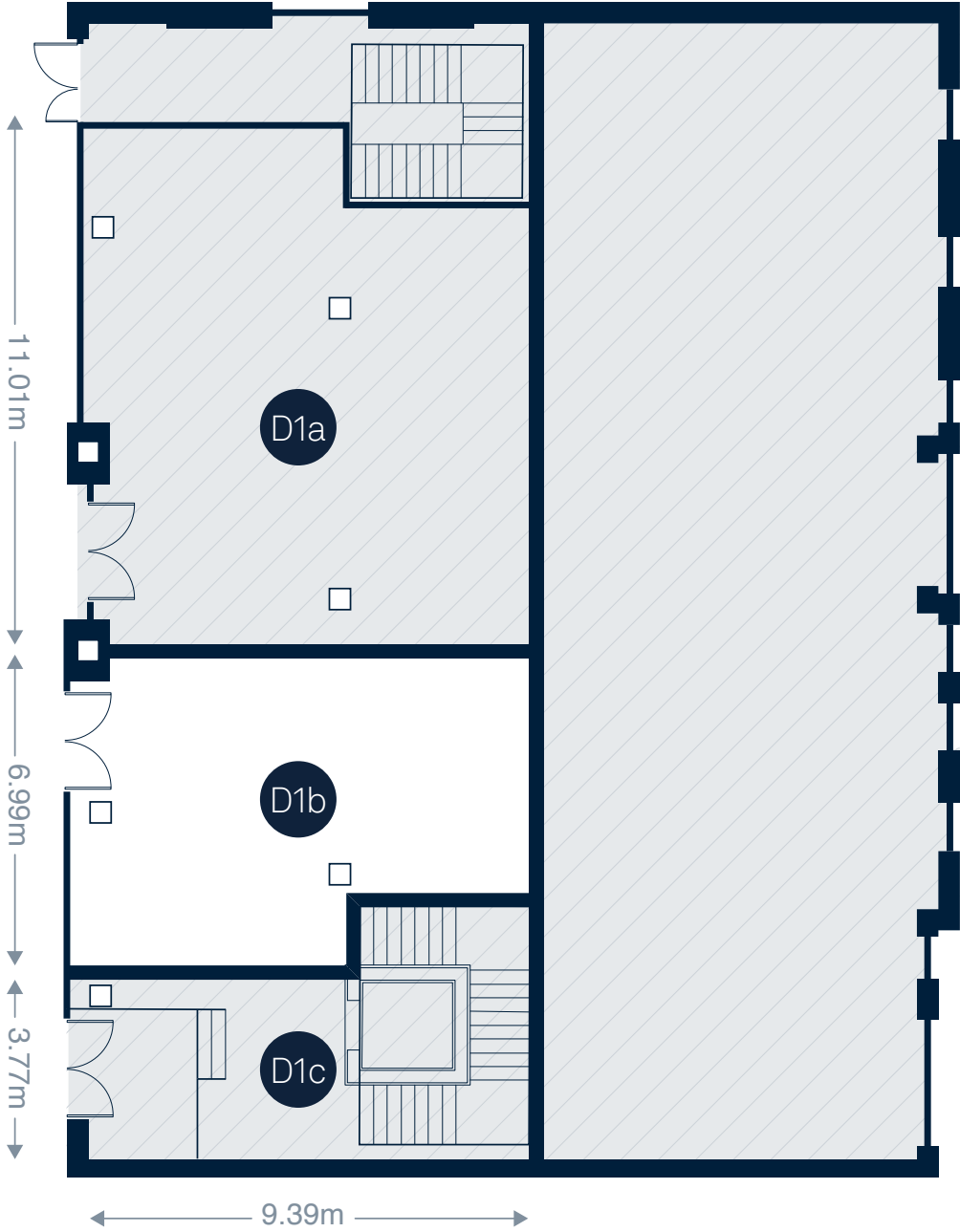
Block D — Unit D1b

Residential and Leisure building



Area:	
D1b Ground Floor	646ft ² 60m ²
Floor to Ceiling Height:	
D1b	3,200mm
(*Structural Slab Level to Concrete Soffit)	

Ground Floor

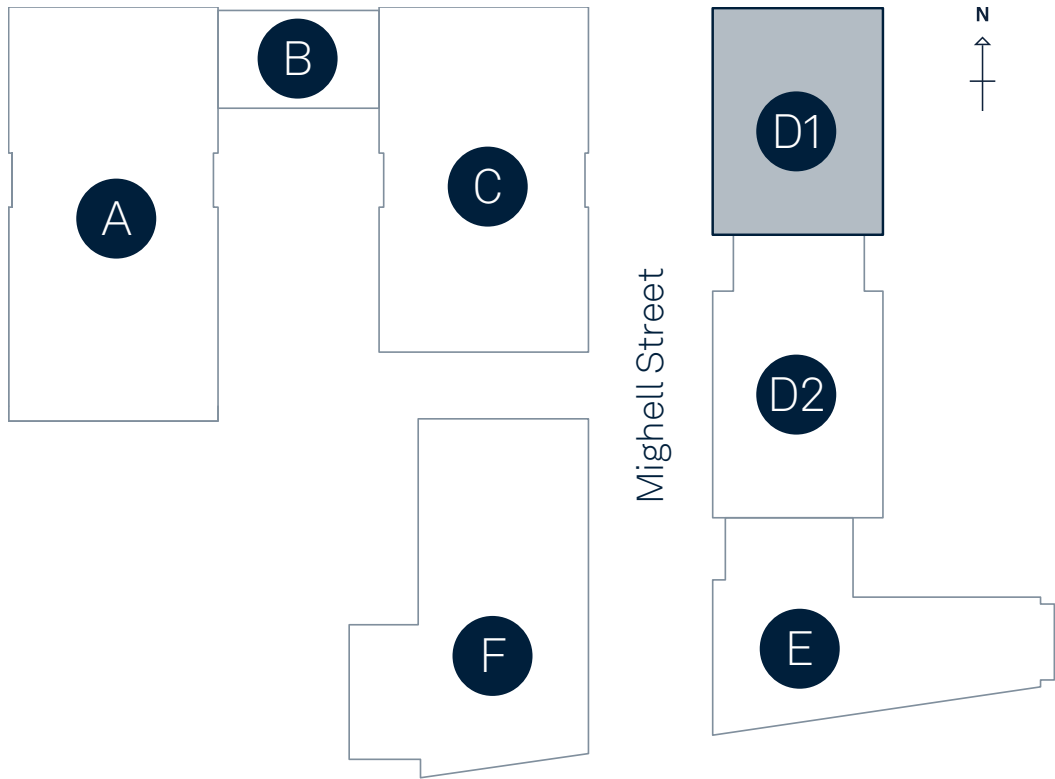


EDWARD
STREET
QUARTER

42 Mighell Street

Block D — Unit D1c

Residential and Leisure building



Area:

D1c Ground Floor	248ft ² 23m ²
D1c Lower Ground Floor	4,585ft ² 426m ²

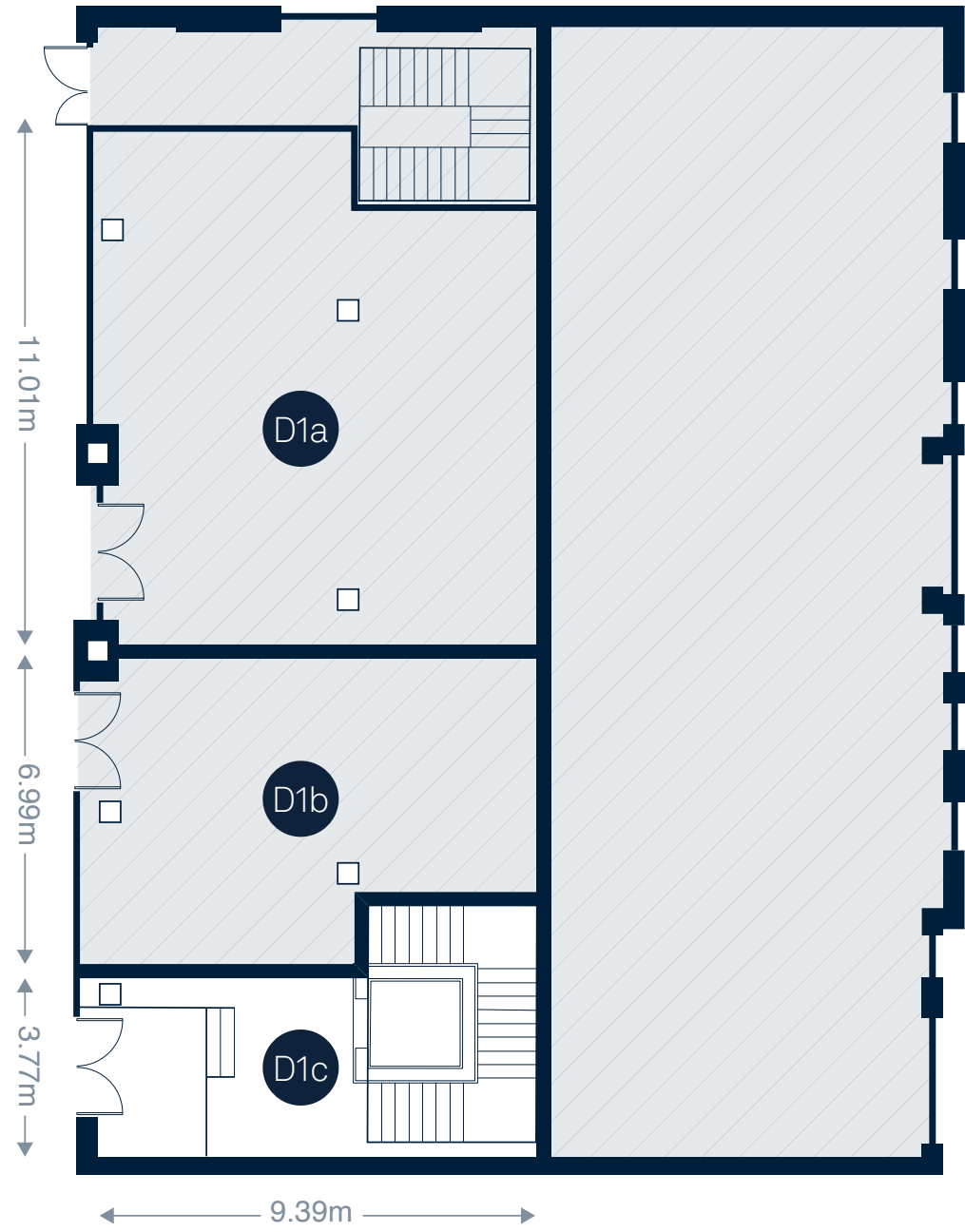
Floor to Ceiling Height:

D1c Ground Floor	3,200mm
D1c Lower Ground	3,250mm

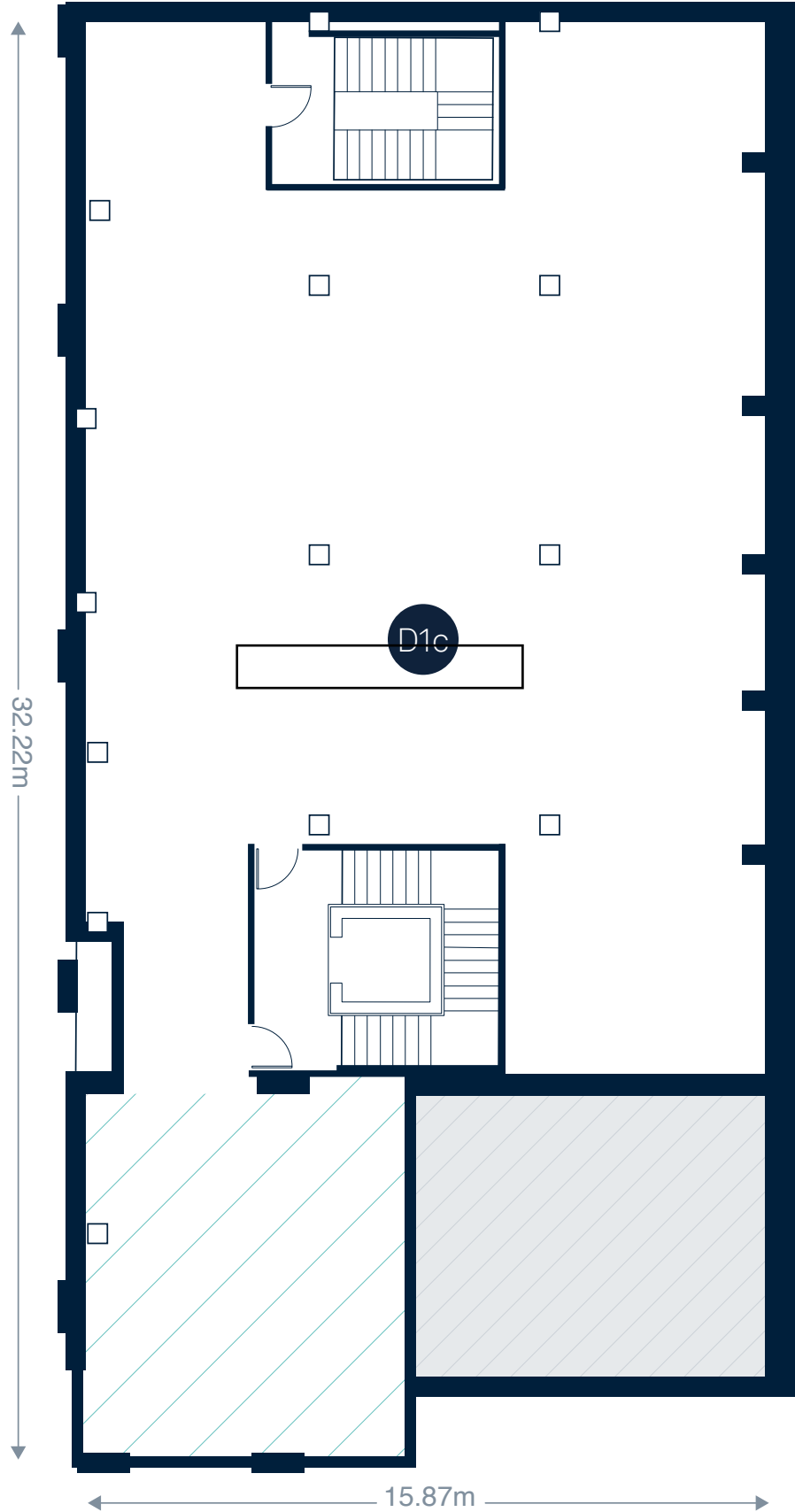
(*Structural Slab Level to Concrete Soffit)

2,350mm
(in hashed Southern section)

Ground Floor



Lower Ground Floor

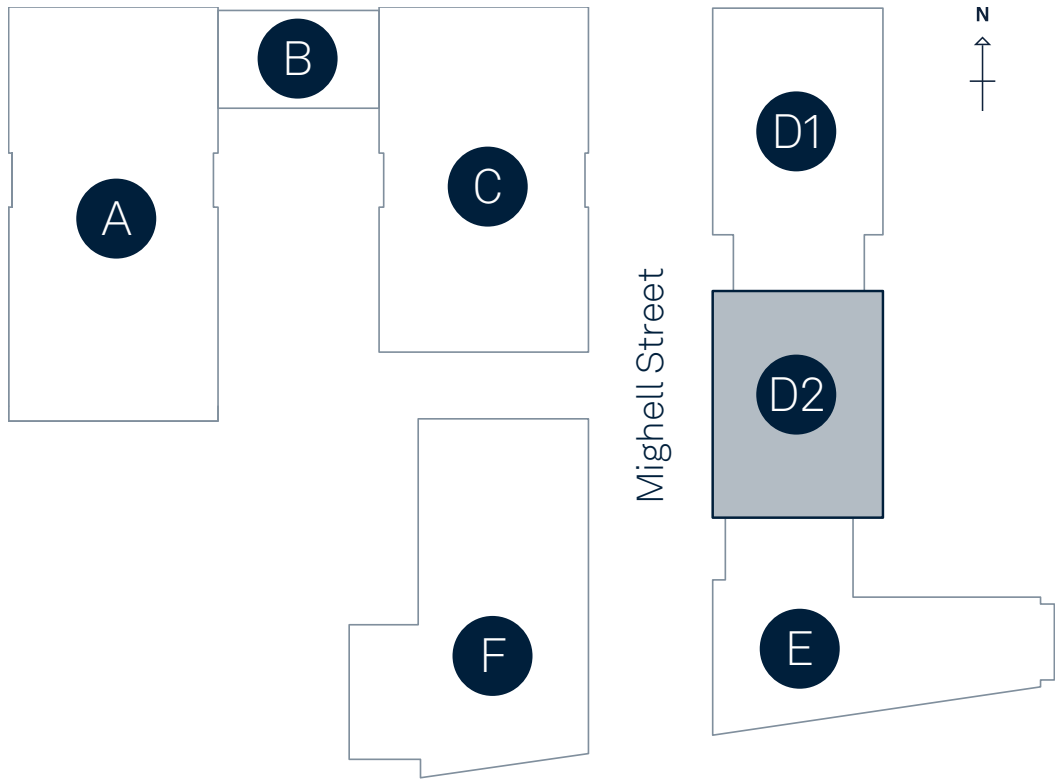


EDWARD
STREET
QUARTER

42 Mighell Street

Block D — Unit D2

Residential and Leisure building



Area:

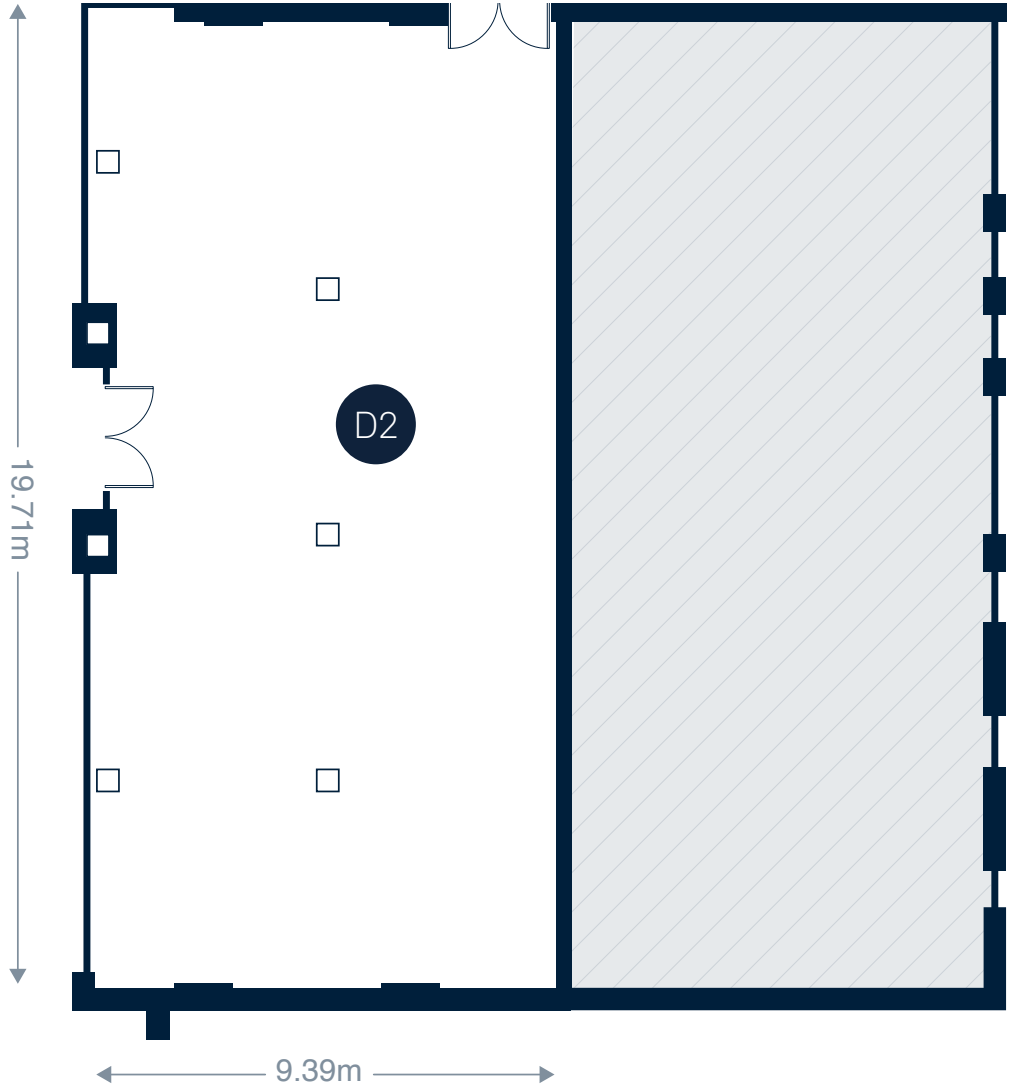
D2 Ground Floor	1,970ft ²
	183m ²

Floor to Ceiling Height:

D2	4,095mm
----	---------

(*Structural Slab Level to Concrete Soffit)

Ground Floor



EDWARD
STREET
QUARTER